

THE SARAWAK CLUB, KUCHING

MOTION AGM/2024/02

RENOVATION CONCEPT DESIGN

1 Front Entrance & Drop-off Extension

2 New Multi-storey Car Park

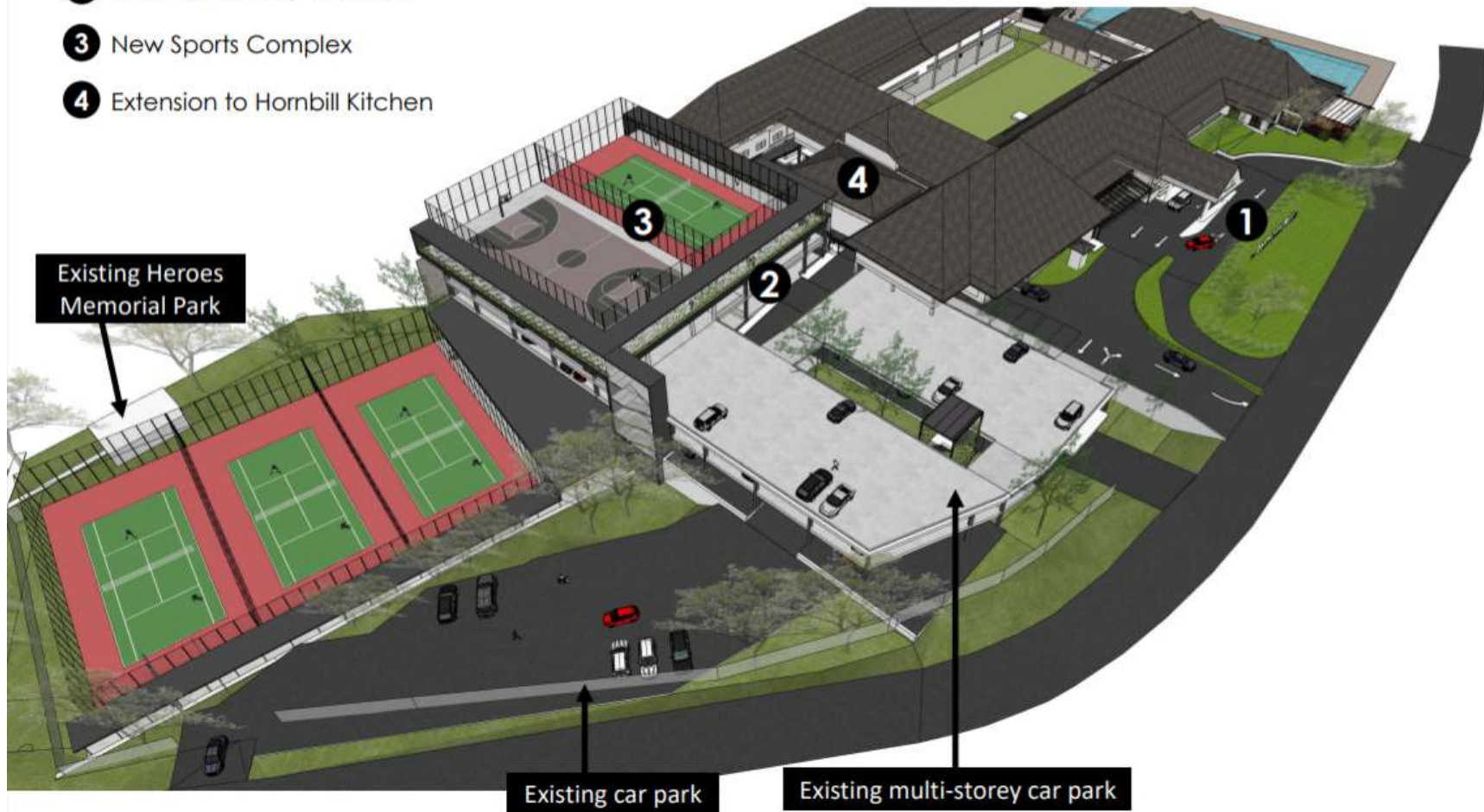
3 New Sports Complex

4 Extension to Hornbill Kitchen

Existing Heroes
Memorial Park

Existing car park

Existing multi-storey car park



1 FRONT ENTRANCE & DROP-OFF EXTENSION

Front Entrance & Drop-off Extension



View of new drop-off from the side

Front Entrance & Drop-off Extension



View of new drop-off from the side

Front Entrance & Drop-off Extension

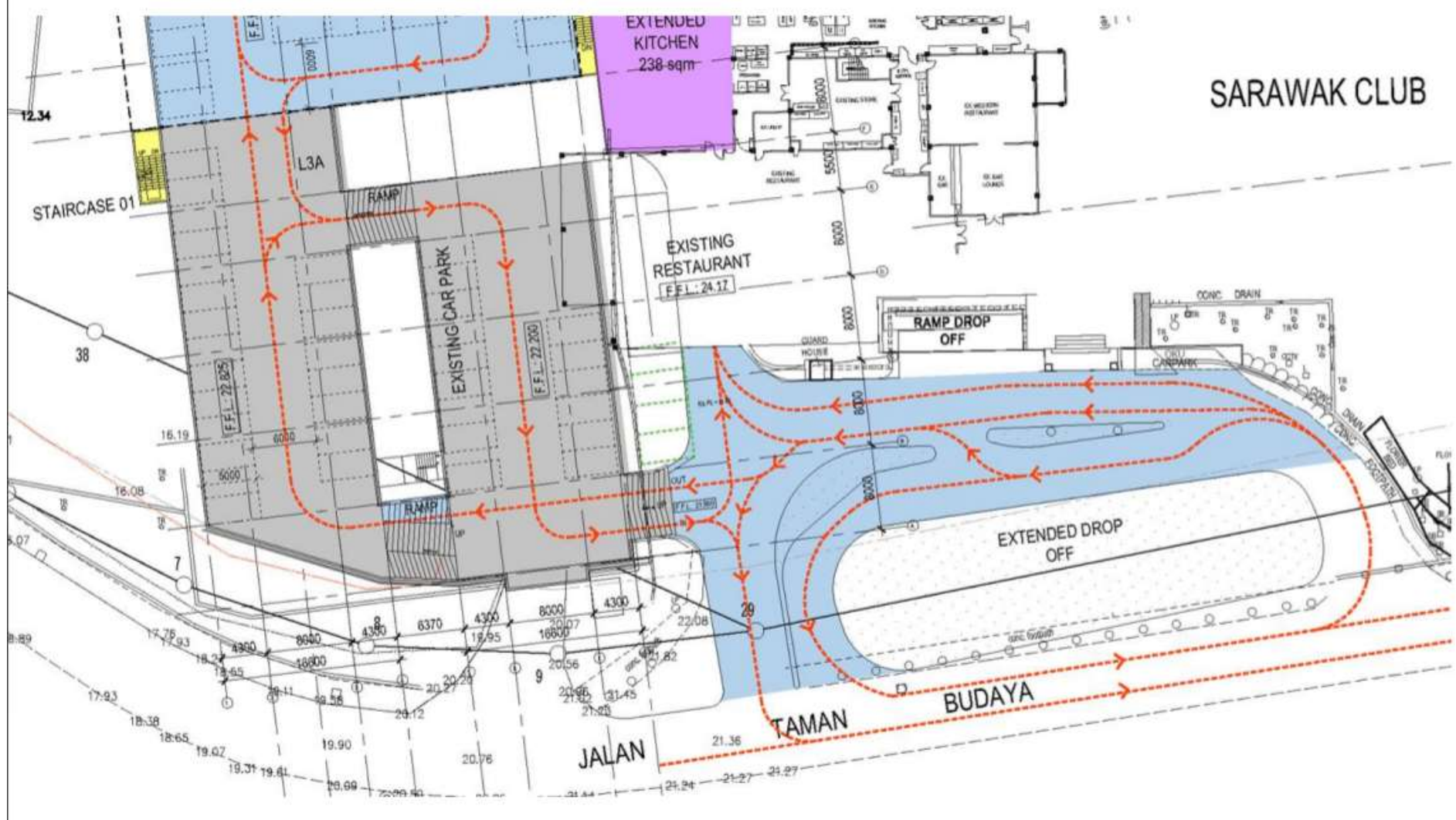


The new drop-off proposes to extend the existing driveway to 3-lanes. This allows for incoming cars to simultaneously drop-off, access the car park, or to make a quick exit.

Front Entrance & Drop-off Extension



View of proposed new 3-lane drop-off



2 + 3

NEW MULTI-STOREY CAR PARK & SPORTS COMPLEX

2 + **3**

NEW MULTI-STOREY CAR PARK

New Multi-storey Car Park & Sports Complex

CARPARKING
NEW CAR PARKS
 L3 - 46 cp
 L2 - 46 cp
 L1 - 42 cp
 TOTAL = 134 cp

EXISTING CAR PARKS TO BE REPLACED
 L3 - 5 cp
 L2 - 1cp
 LG - 7 cp (Front existing cp)
 TOTAL LESS = - 13 cp

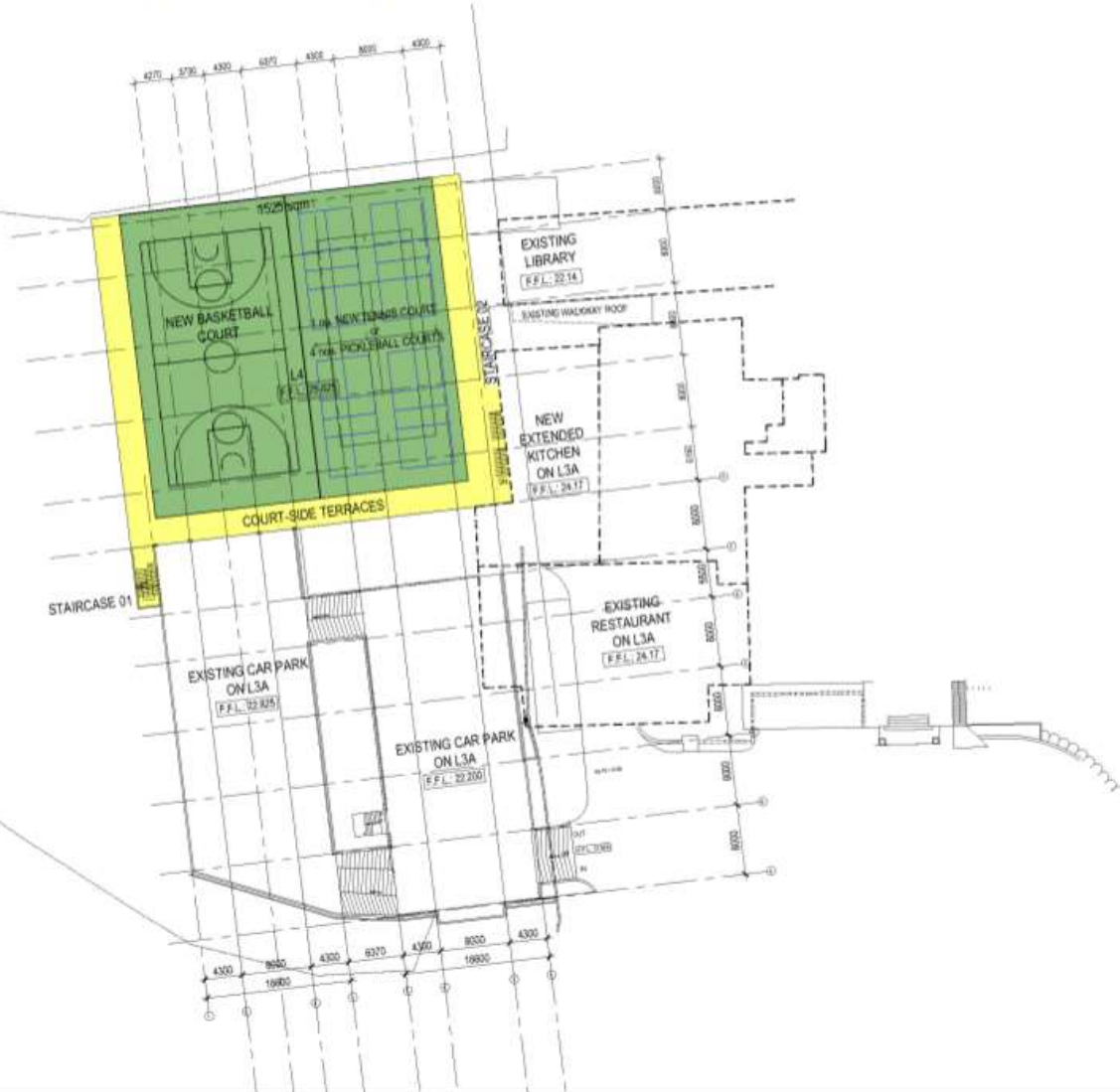
NETT CARPARKING ADDITIONAL
 = 134 - 13
 = 121 cp

EXISTING CARPARKS = 187 cp

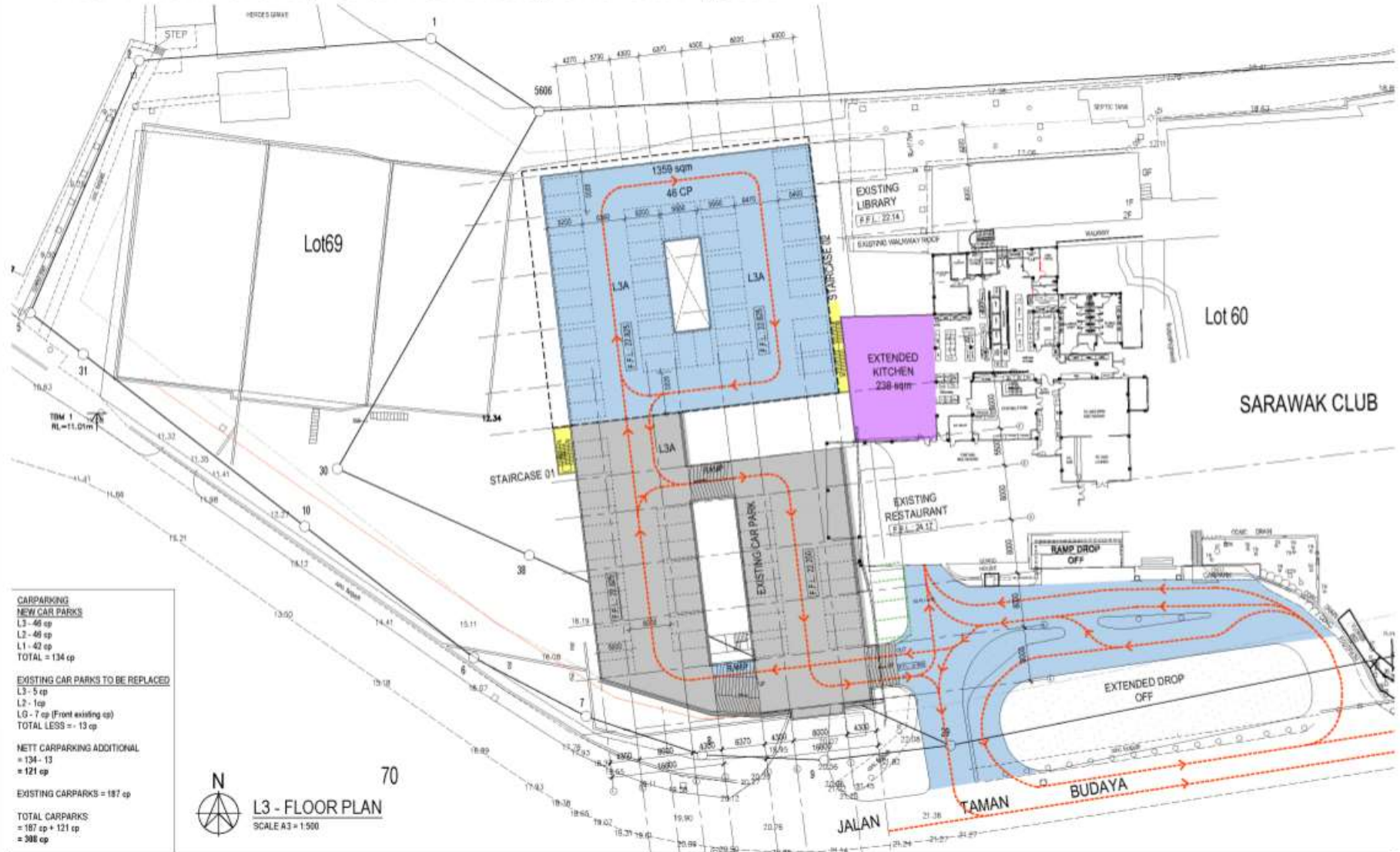
TOTAL CARPARKS
 = 187 cp + 121 cp
 = 308 cp



L4 - FLOOR PLAN
 SCALE A3 = 1:500



New Multi-storey Car Park & Sports Complex



New Multi-storey Car Park & Sports Complex



New Multi-storey Car Park & Sports Complex



LG - FLOOR PLAN
SCALE A3 = 1:500

CARPARKING
NEW CAR PARKS
L3 - 46 cp
L2 - 46 cp
L1 - 42 cp
TOTAL = 134 cp

EXISTING CAR PARKS TO BE REPLACED
L3 - 5 cp
L2 - 10 cp
LG - 7 cp (Front existing cp)
TOTAL LESS = - 13 cp

NETT CARPARKING ADDITIONAL
= 134 - 13
= 121 cp

EXISTING CARPARKS = 187 cp

TOTAL CARPARKS
= 187 cp + 121 cp
= 388 cp

TOTAL CARPARKS
= 187 cp + 121 cp
= 308 cp

LG - FLOOR PLAN
SCALE A3 = 1:500

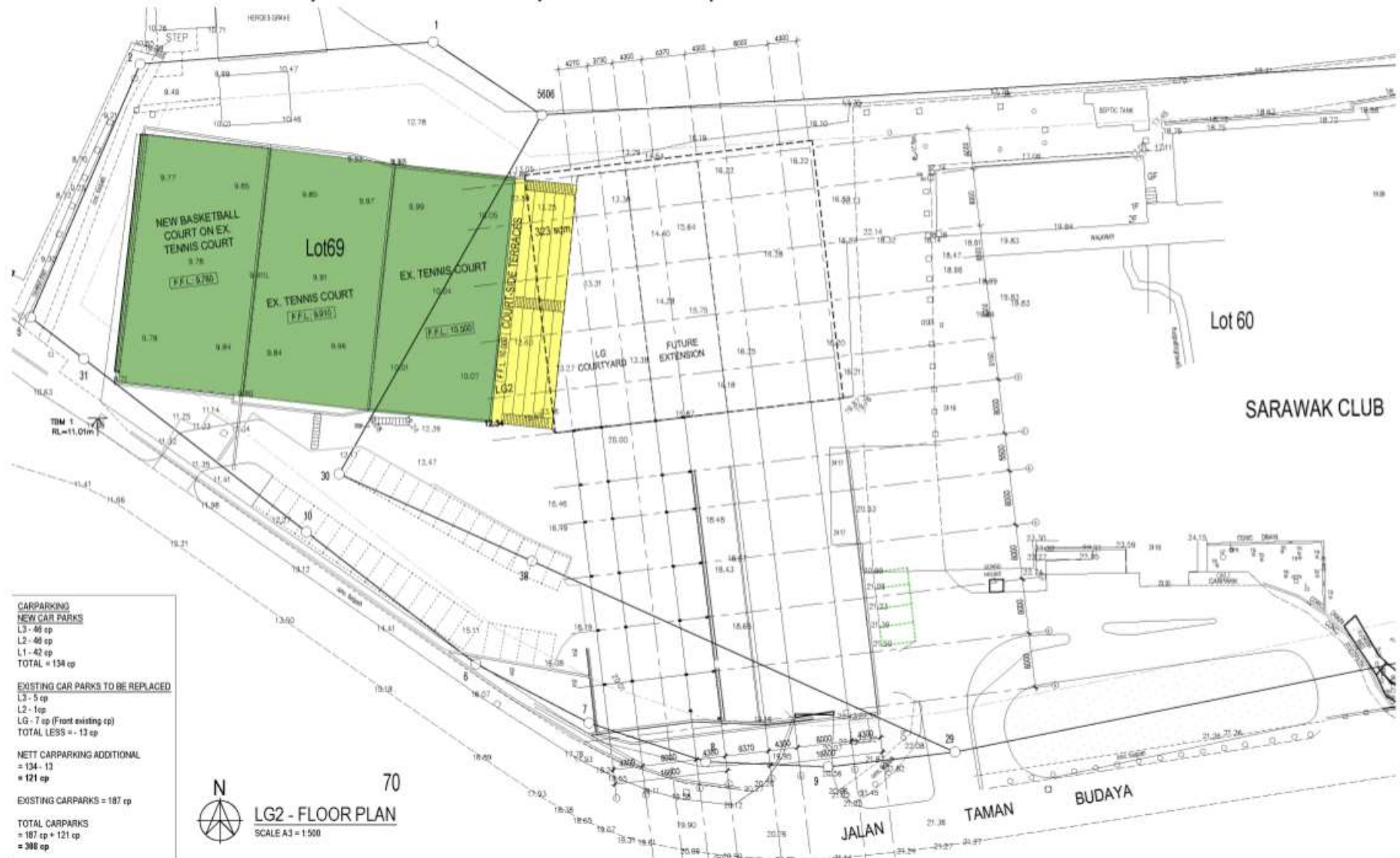
70

JALAN

TAMAN

BUDAYA

New Multi-storey Car Park & Sports Complex



New Multi-storey Car Park & Sports Complex



Front Aerial View

New Multi-storey Car Park & Sports Complex

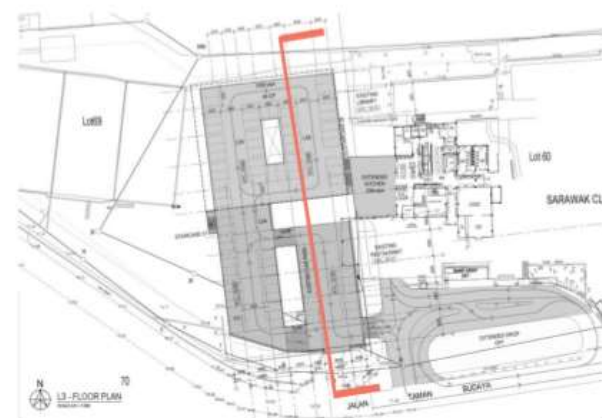


Rear Aerial View

New Multi-storey Car Park & Sports Complex



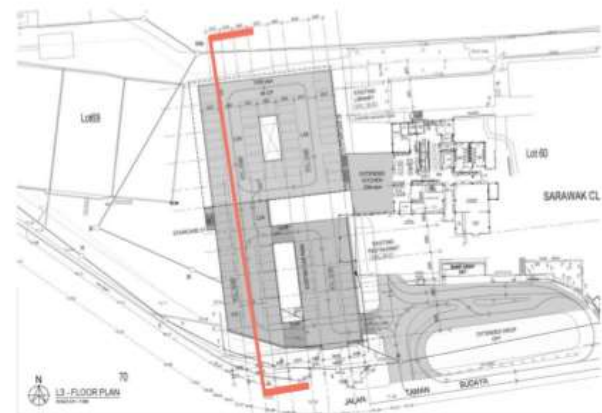
Section 1



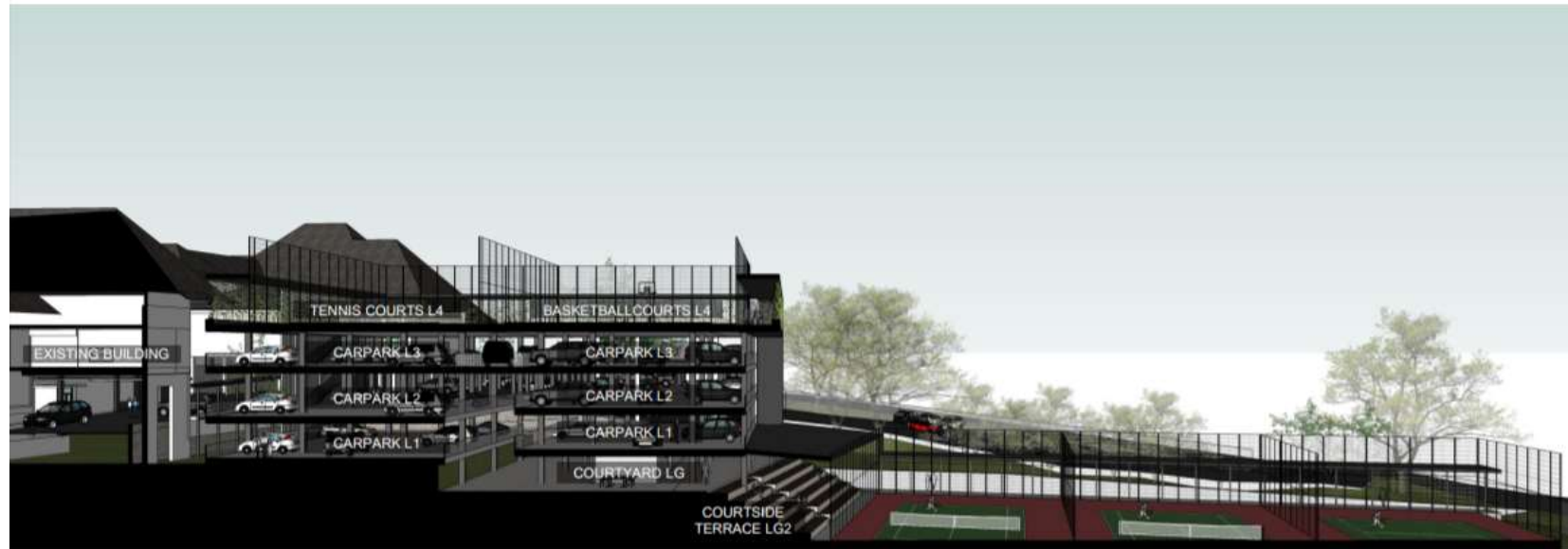
New Multi-storey Car Park & Sports Complex



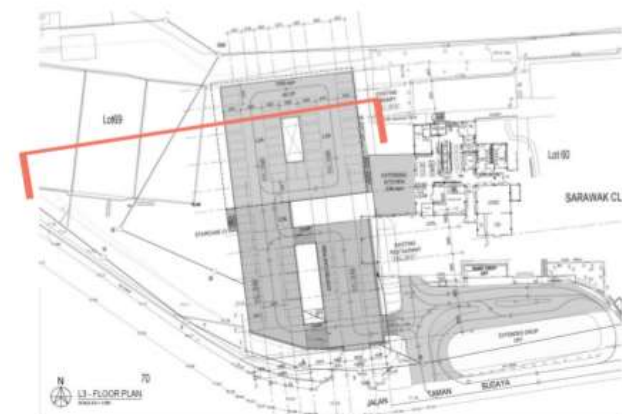
Section 2



New Multi-storey Car Park & Sports Complex



Section 3



New Multi-storey Car Park & Sports Complex



Entrance to Carpark from existing drop-off

New Multi-storey Car Park & Sports Complex



View of rooftop carpark

New Multi-storey Car Park & Sports Complex



Entrance to existing and new multi-storey carpark

New Multi-storey Car Park & Sports Complex



Interior view of new multi-storey carpark @ L2

New Multi-storey Car Park & Sports Complex



View of new access & exit of new multi-storey carpark

New Multi-storey Car Park & Sports Complex



View of new multi-storey carpark

New Multi-storey Car Park & Sports Complex



Section of New Car Park & Sports Complex

2 + 3

**NEW TENNIS COURTS, BASKETBALL COURT &
COURTSIDE TERRACE**

New Multi-storey Car Park & Sports Complex



Front Aerial View

New Multi-storey Car Park & **Sports Complex**



View of new court-side terraces from existing tennis courts @ existing ground level

New Multi-storey Car Park & **Sports Complex**



View of new court-side terraces and existing tennis courts

New Multi-storey Car Park & **Sports Complex**



View of new court-side terraces and existing tennis court @ existing ground level

New Multi-storey Car Park & **Sports Complex**



View of new court-side terraces @ existing ground level

New Multi-storey Car Park & **Sports Complex**



View to new courtyard @ lower ground level.

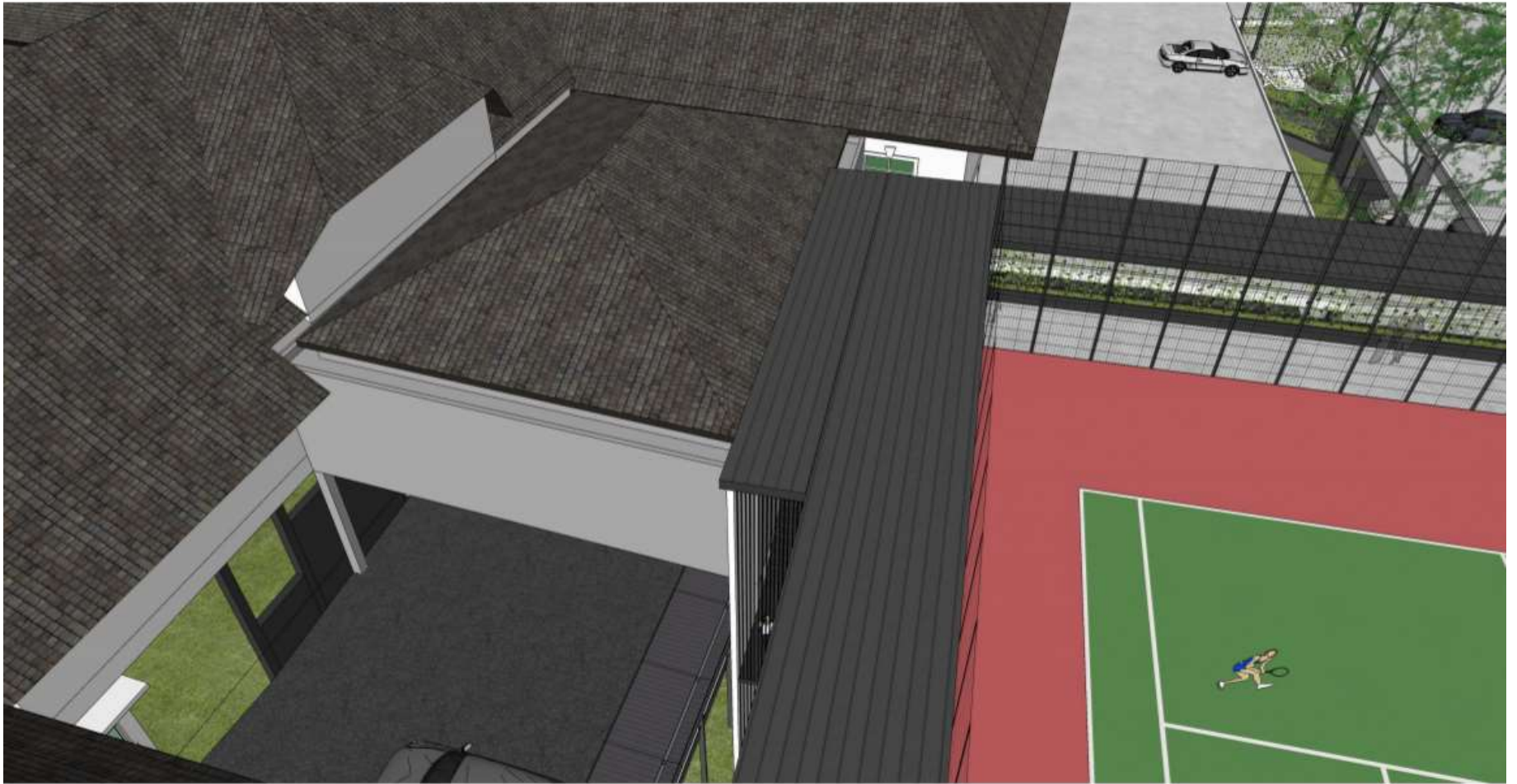
4 EXTENSION TO HORNBILL KITCHEN

Extension to Hornbill Kitchen



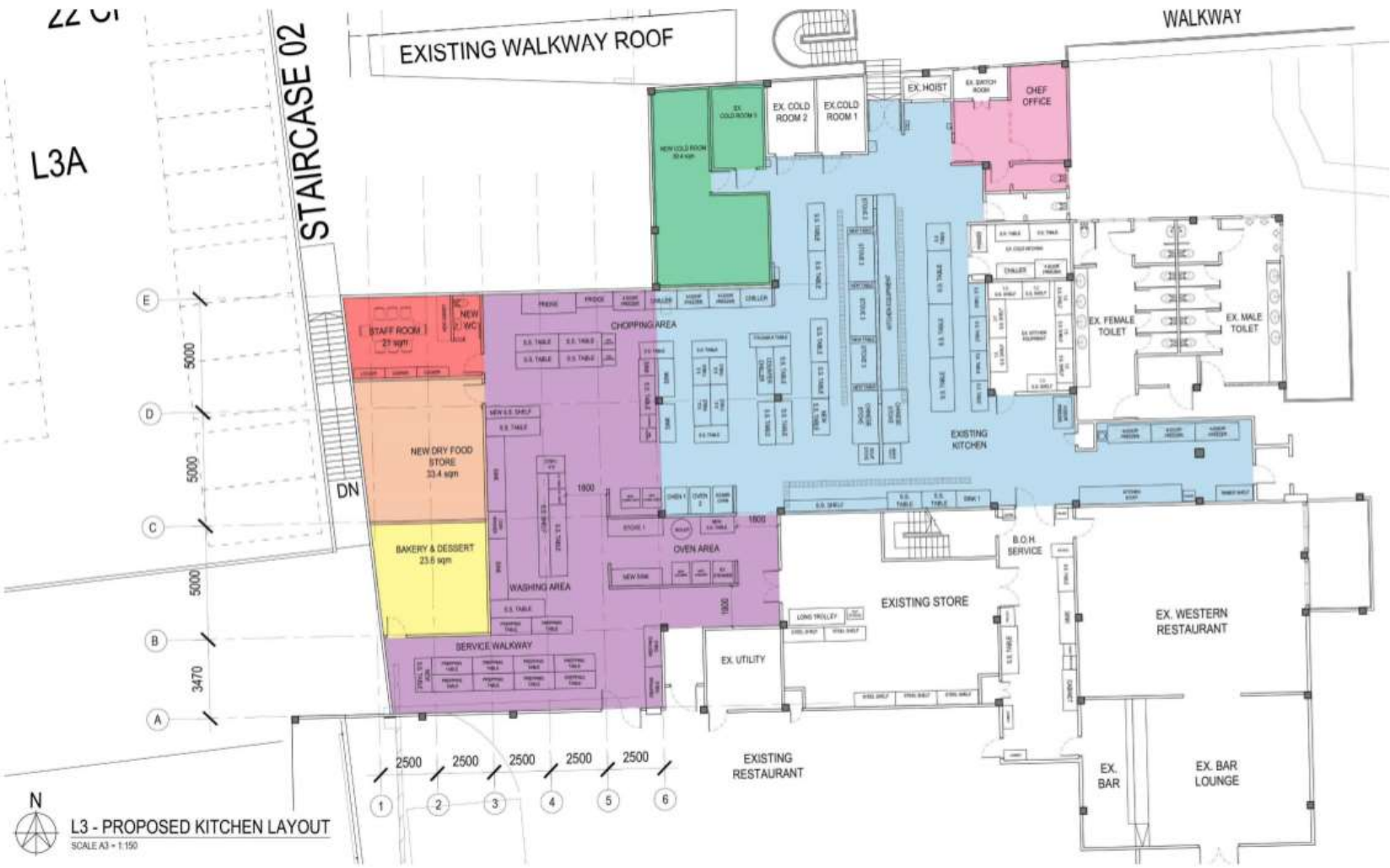
View of extended Hornbill Kitchen

Extension to Hornbill Kitchen



Aerial view of extended Hornbill Kitchen

Extension to Hornbill Kitchen – Floor Plan



Proposed New Kitchen Extension & Layout

THE END